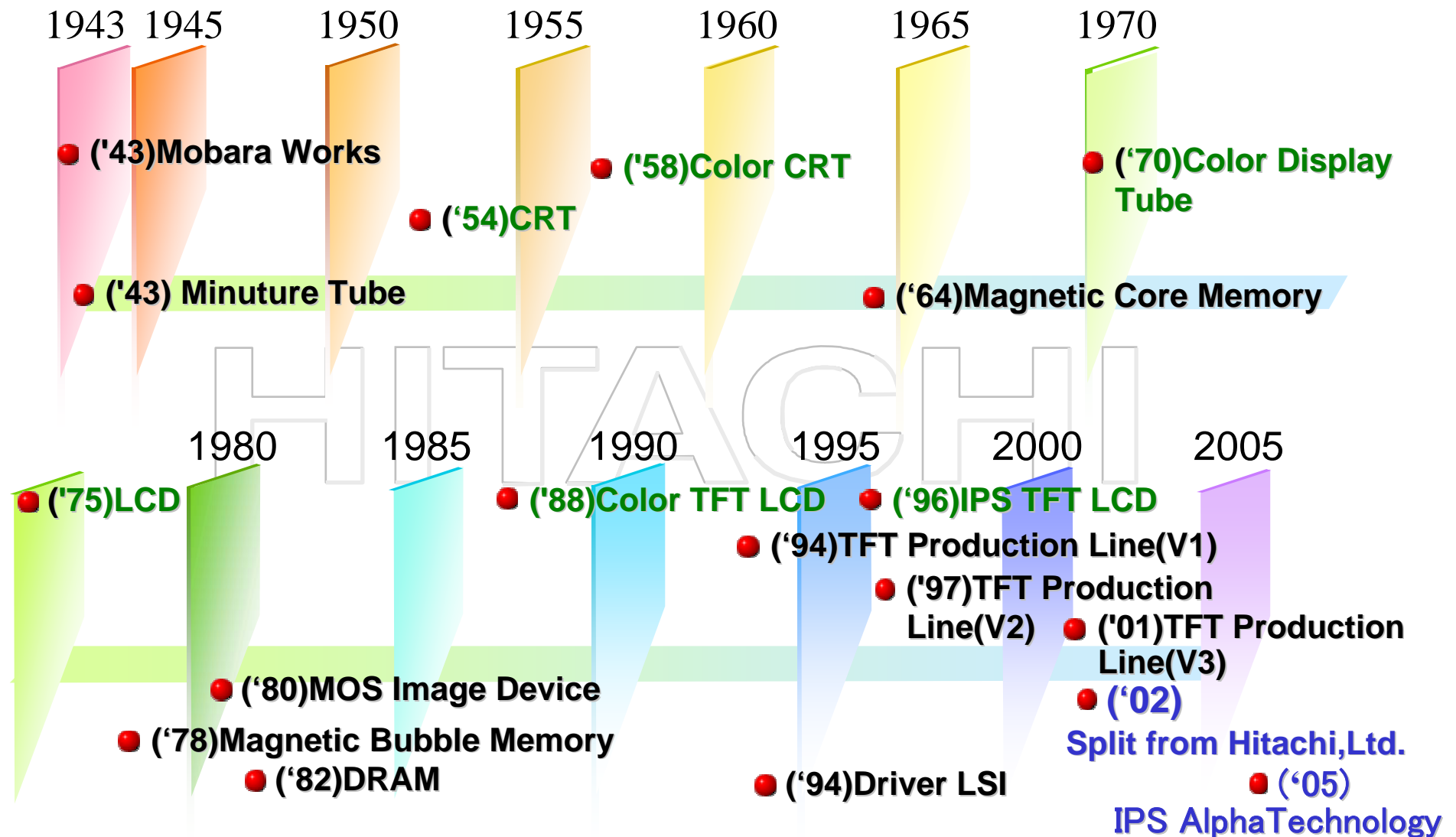


1. Founded	October 1, 2002 (It was inaugurated as a Mobara factory of Hitachi, Ltd. in 1943)
2. Capital Stock	35 billion yen
3. President & CEO	Yoshiyuki Imoto
4. Number of Employees	2,100(March, 2007)
5. Net Sales	200 billion yen(Consolidated Basis) For the Year Ended March 31,
6. Segment	Small-sized TFT LCDs for cellular, Middle-size and small-size low-temperature poly-silicon TFT, Driver LSI on the LCDs
7. Overseas Affiliated Companies	Kaohsiung Hitachi Electronics Co., Ltd. Hitachi Display Devices (Suzhou) Co., Ltd. Shenzhen Hitachi Displays, Co., Ltd. Hitachi Electronic Devices (USA), Inc.
8. Domestic Affiliated Companies	Hitachi Display Technologies, Ltd. Hitachi Display Devices, Ltd. Mobara Atecs Co., Ltd. IPS Alpha Technology, Ltd.





Cellular phone



Compact digital camera



Digital Single-lens reflex (SLR) camera



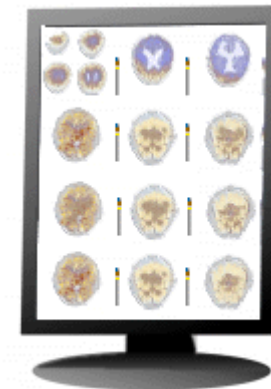
Fish finder



Portable DVD Player



Bar-code terminal



Monitor for medical purposes



Digital Single-lens reflex (SLR) camera



Car Navigation/PND



Fish finder



Portable DVD



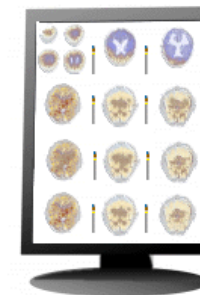
Cellular Phone



Compact digital camera

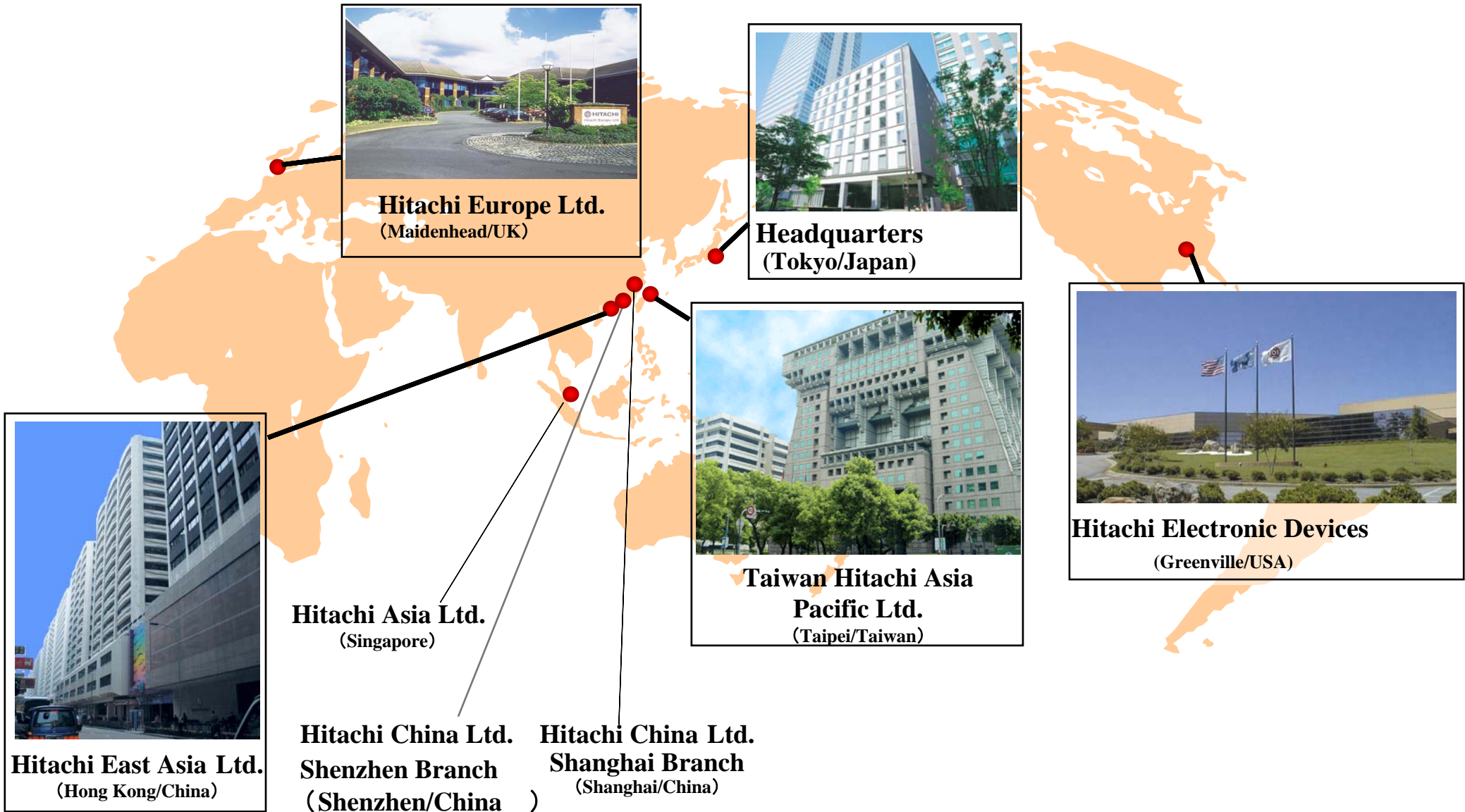


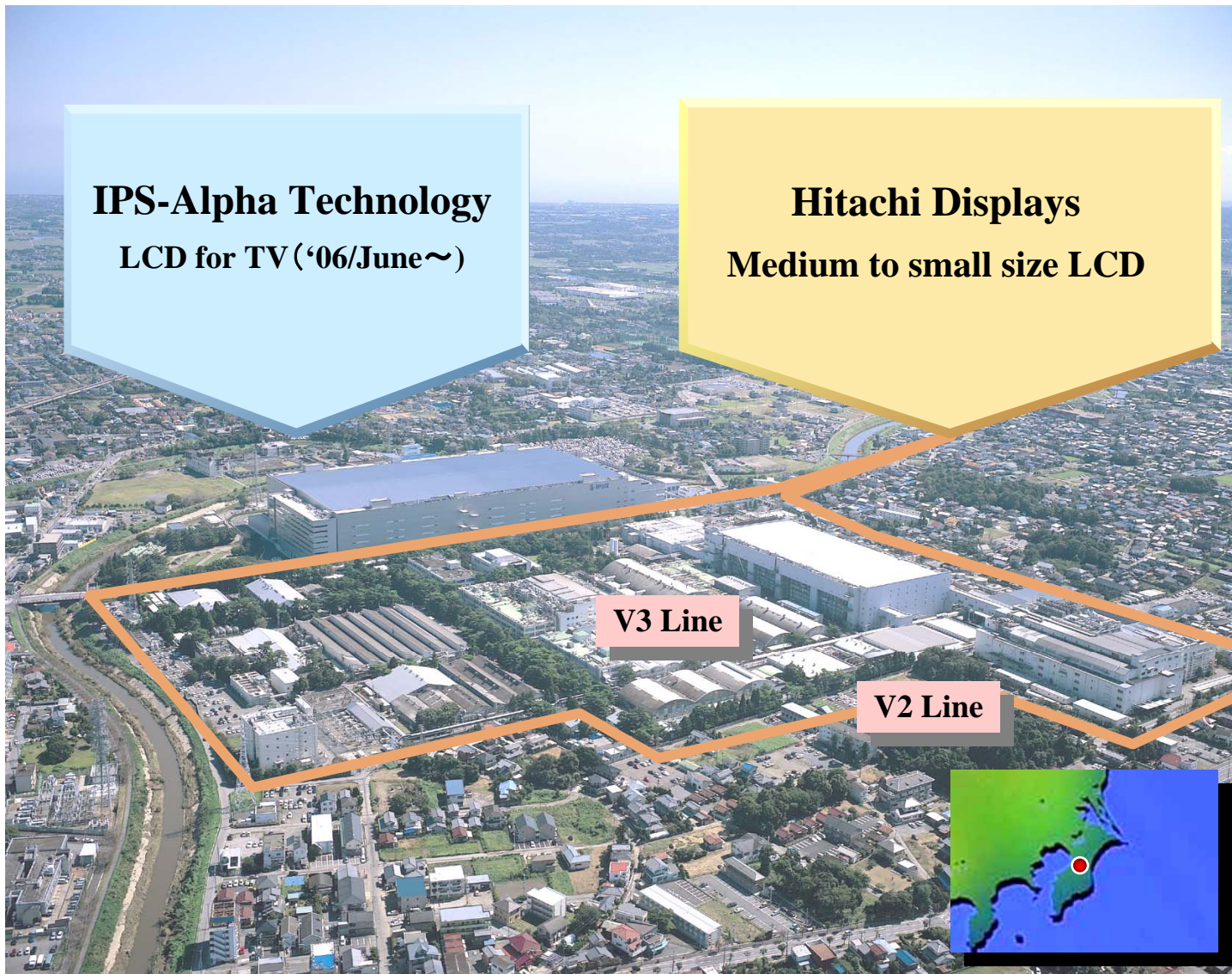
Industrial



or medical purposes

IPS Technology is contributing to various applications in the market







Hitachi Electronic Devices (Wujang) Co., Ltd. (HEDW)
Production and sales of Backlight



Hitachi Display Devices (Suzhou) Co., Ltd. (HDSC)
Production of Large size and small size LCD Module
LCD Module



Shenzhen SEG Hitachi Color
Display Devices Co., Ltd.
(HDSZ) Backlight production



Kaohsiung Hitachi Electronics Co., Ltd. (KHE)
Design, production and sales of small size LCD module
Production and sales of large size LCD module
Design, production and sales of Backlight

Device and System



Hitachi Res.Lab.
(Materials and Devices)

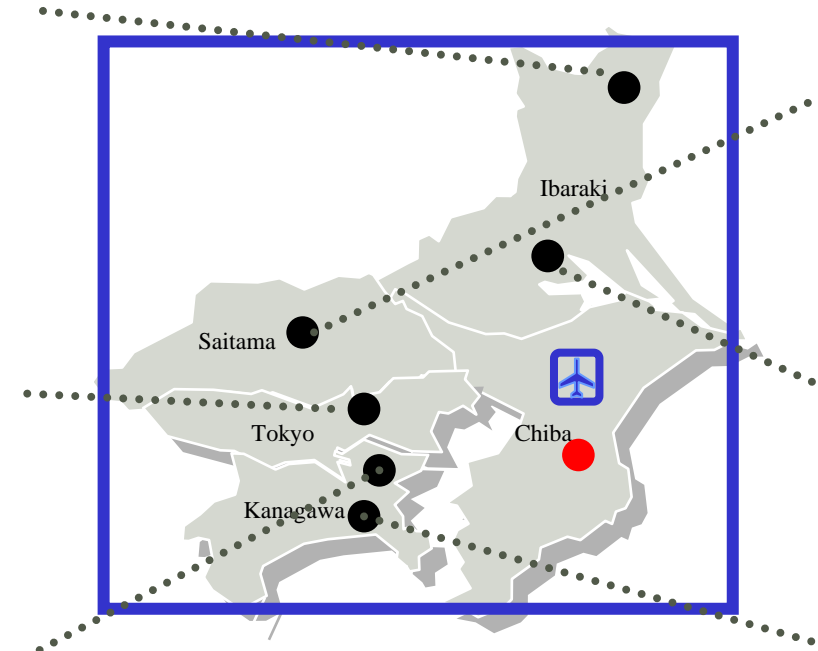


Central Res.Lab
(Information and Devices)



System Development Lab.
(Information Systems)

Leading Technologies from Hitachi's R&D Laboratory



Process and Materials



Advanced Res. Lab.
(State-of-the-art technology)



Mechanical Eng Lab.
(Base for mechanical systems)



Production Eng Res. Lab.
(Manufacturing technologies)



Hitachi Displays



Hitachi Display Devices

